

# SD150A & SD250A TYPES COMBINED MANUAL DISCONNECT & LINE CONTACTORS



SD150A

These switches combine the dual function of a manual disconnect and coil operated line contactor. The benefits of this design include compact size and reduced installation costs combined with an electrical capacity sufficient for most small and medium size electric vehicles.

## Modes of Operation

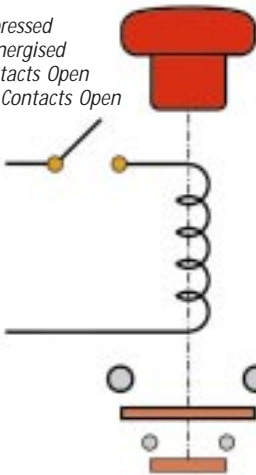
The operation of the SD150A & SD250A switches is such that with the operating knob depressed i.e. in the "Off" position, no electrical functions can take place. However if the knob is in the "On" position, the option of energising the coil and thus closing the main contacts becomes available. The coil energisation can be carried out either through the vehicle keyswitch or as a result of a signal from the vehicle electronic controller.

When the SD150A & SD250A switches are used as an emergency battery disconnecting switch, manually depressing the operating knob will override the energised coil such that the main contact and the auxiliary contact will open until such time as the knob is again moved to the "On" position.

## Operating Modes for SD150A & SD250A...

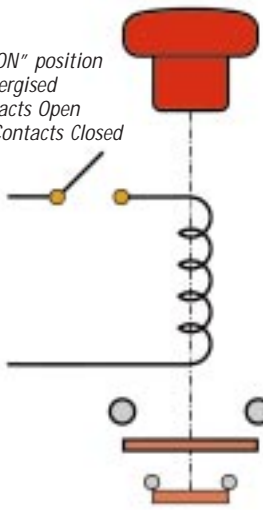
Knob depressed  
Coil De-energised  
Main Contacts Open  
Auxiliary Contacts Open

1...



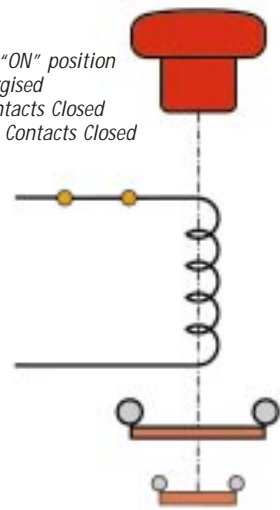
Knob in "ON" position  
Coil De-energised  
Main Contacts Open  
Auxiliary Contacts Closed

2...



Knob in "ON" position  
Coil Energised  
Main Contacts Closed  
Auxiliary Contacts Closed

3...



## Operating Coils

These are normally continuously rated, although intermittently rated versions are also available.

## Auxiliary Contacts

An integral auxiliary contact is fitted to the SD150A & SD250A. This has one normally open contact which closes when the knob is put into the "On" position.

The status of the auxiliary contact on the SD150A & SD250A switches is not affected by the energisation or de-energisation of the coil.

An additional double circuit normally open, normally closed changeover auxiliary contact can be fitted to the SD150A & SD250A switches.

The suffix "A" indicates the fitting of auxiliary contacts.

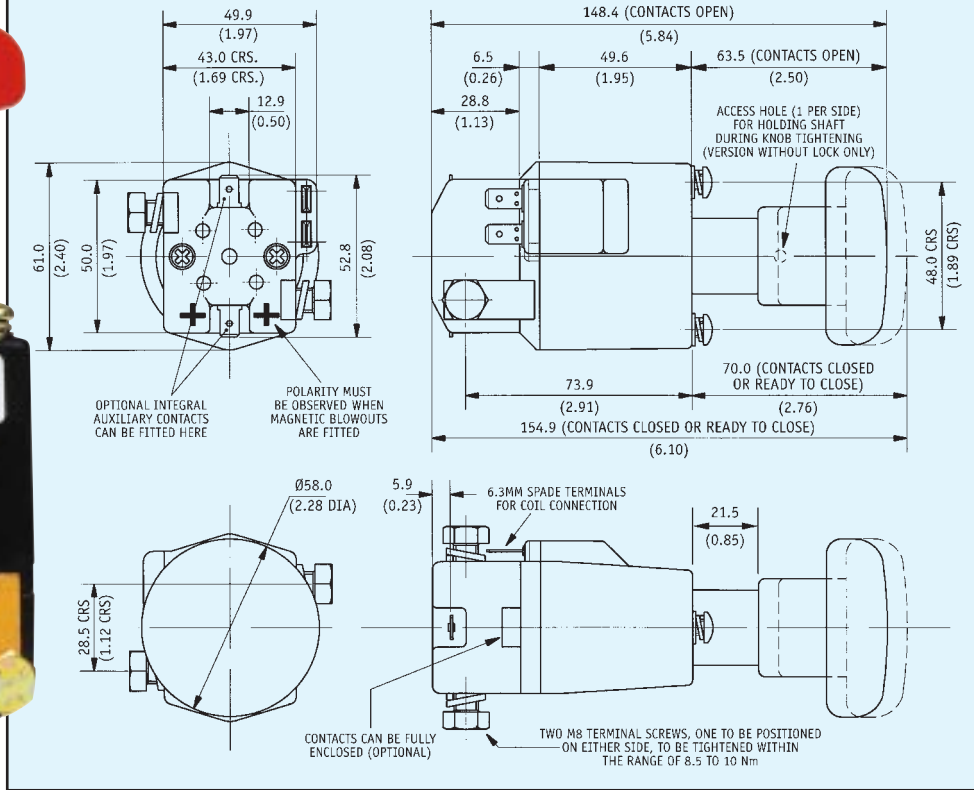
**Heavy Duty  
DC Battery  
Disconnecting  
Switches from...**

**Albright**  
INTERNATIONAL

**SD150A**  
125 AMPERE  
SINGLE POLE



Dimensions in mm (inches). See Page 7 for mounting details.



**SD250A**  
250 AMPERE  
SINGLE POLE



Dimensions in mm (inches). See Page 7 for mounting details.

