

SmartView™

CAN Display for Battery Powered Vehicles

The SmartView™ CANopen Display is an extension of Sevcon's range of dashboard mounted display products for battery powered vehicles. This compact LCD gauge is fully compatible with any of the Sevcon CAN-based controllers.

Feature Overview

- Specifically designed with a sharp display for ease of reading
- Battery state of charge through a 10-segment BDI bar graph
- Programmable warning, cutout, empty and full levels
- Hour count can be configured to show traction, pump or key-switch hours via clear icons
- Intelligent fault indication to aid troubleshooting
- Ability to manage planned vehicle maintenance via a pre-alarm and using two user configurable tool icons
- Powered from the CAN bus thus eliminating unnecessary wiring
- Optional backlit version
- Sealed front face (IP65)



Partner with Performance™

Battery state of charge

- 10 segment LCD bar graph
- Battery discharge algorithm programmable through the Sevcon controller software

Hourmeter value: 99 999.9 h

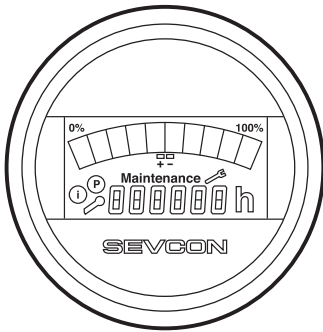
- 6 digits, display accuracy 1/10 h
- Specific icons for Key Switch, Traction or Pump motor corresponding counts and "h" symbol

Fault Code: Fxxxxx

- 6 digits

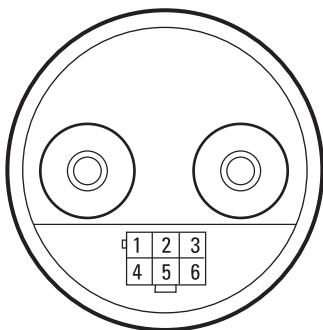
Maintenance Monitor

- Maintenance and Tool Icons with programmable activation



Wiring

- Pin 1 = NC
- Pin 2 = supply -
- Pin 3 = backlight+
- Pin 4 = supply +
- Pin 5 = CAN_H
- Pin 6 = CAN_L



Technical Specifications

General

Display type: Liquid Crystal Display (LCD)

Numeral size: 5mm

Viewing angle: 180 degrees

Housing: Plastic bevelled black chrome-plated bezel and glass front.

Mounting: U clamp with plastic nuts

Panel thickness: 0.5 to 7.0mm

Back lit illumination: Optional, remotely controlled

Electrical

Operating voltage: 10VDC to 14VDC reverse polarity protected

Current consumption: 20mA max, <100mA with backlit option

Communication interface: CAN 2.0B passive up to 500k

Input pin protection: Protected against connection to 60V and supply

Protection against transients: +/- 250V for 20°s with 10ms repeat on each input

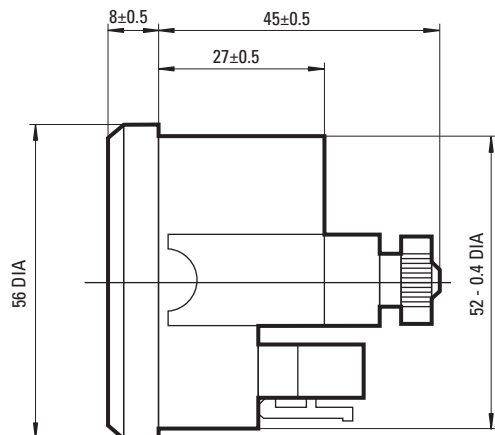
Environmental

Ambient temperature: -30C to +50C

Storage temperature: -40C to +85C

Vibration / Shock: SAEJ 1378

Degree of protection (front): IP65



Sevcon Ltd.
Kingsway South
Gateshead, NE11 0QA
England
Tel +44 (0)191 497 9000
Fax +44 (0)191 482 4223
sales.uk@sevcon.com

Sevcon, Inc.
155 Northboro Road
Southborough, MA 01772
USA
Tel (508) 281 5500
Fax (508) 281 5341
sales.us@sevcon.com